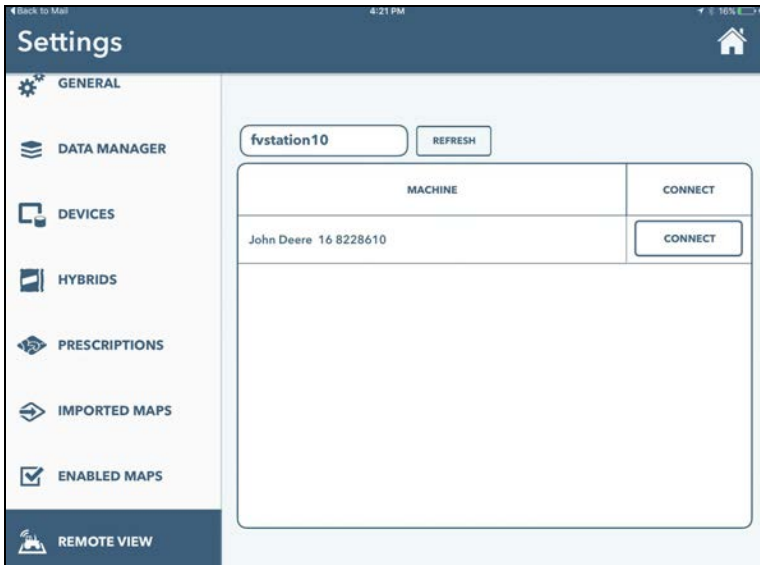


How to View Live Data from Remote Planters and Combines via FieldView

Summary: FieldView users can use the RemoteView feature in FieldView to remotely connect to a 20/20 Display. This establishes a “wireless connection” to the 20/20 via the cloud and allows the viewer to see live Planting/Harvest info in their own FieldView App as if it was connected in the cab. Maps, Widgets, Metrics and Diagnostic info(YieldSense only) will all stream to the viewer’s FieldView in a read only mode.

Step #1: Remote Viewer -- Select machine to view in FieldView app.

- From Settings Menu, select RemoteView
- A list of planters and combines will be displayed. Select a machine that is available to Connect, all machines available to be connected will be located at the top of the list. Unavailable machines are not currently connected to a FieldView app with active internet connection.
- Note* Dealers will have access to select their growers only – type in PP account username to view customer’s equipment or tap on the search box to bring up a list of all customers to select from.
- Note* If the viewer is a dealer or PP Product Support, the machine operator will be prompted to allow the remote connection to be established. If the viewer is on the same account as the operator, then the viewer will be taken to the Map Screen automatically without an operator prompt.



Step #2: View Live Maps & Metrics from the Map screen of FieldView

- To be able to connect and use RemoteView, both the sending and receiving FieldView apps must have an Internet connection. Also, the FieldView app receiving cannot be connected to a 20/20.
- All maps will be created on remote viewer's iPad with data streamed from the connected 20/20 display.
- Left Pane and Control Pane widgets will display live, real time data. The Remote viewer can configure the widgets as desired on his iPad.
- Note* The remote viewer cannot change the 20/20 display or the operator's FV App in any way. RemoteView cannot add loads, select hybrids, or adjust any configuration settings – RemoteView is read only.

Step #3: Menu on



View Setup information from the More Map Screen

- Select the More Menu and choose the Equipment Setup option.
- For SeedSense, select Tractor or Planter to view configuration information from the remote planter
- For YieldSense, Select Combine or Head Setup to view YieldSense configuration from the remote combine. Select Diagnose to view the Diagnostic information from the remote combine.

Note* The RemoteView session will disconnect after 1 hour OR the remote user can disconnect at any time.