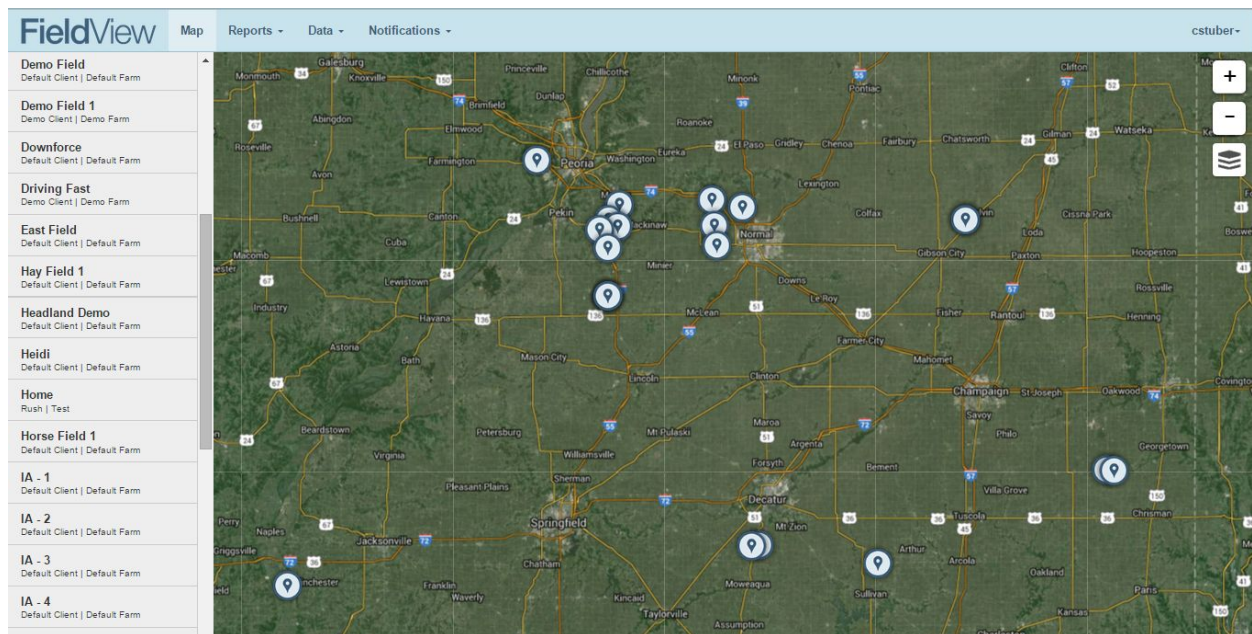


**Summary:** Growers with a FieldView® Plus subscription can view both Planting and Harvest Maps in the FieldView Website. Analyze Harvest Data by overlaying Yield & Moisture Maps with Soil Zones or any Imported Map (Shape File) or use simple drawing tools to analyze specific sections of a field.

**Step #1:** Go to the FieldView website (<http://fieldviewplus.com>) and choose Maps

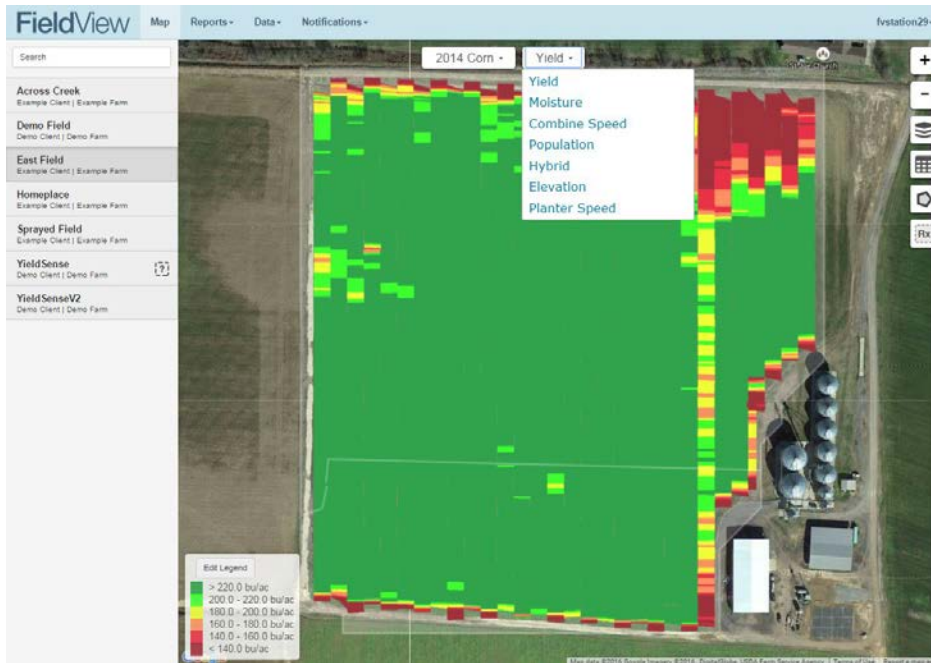


- From the Map screen select a field by choosing it from the list on the left side of the screen or clicking on a field marker on the map. Upon selecting a field the map will zoom to display the chosen field.



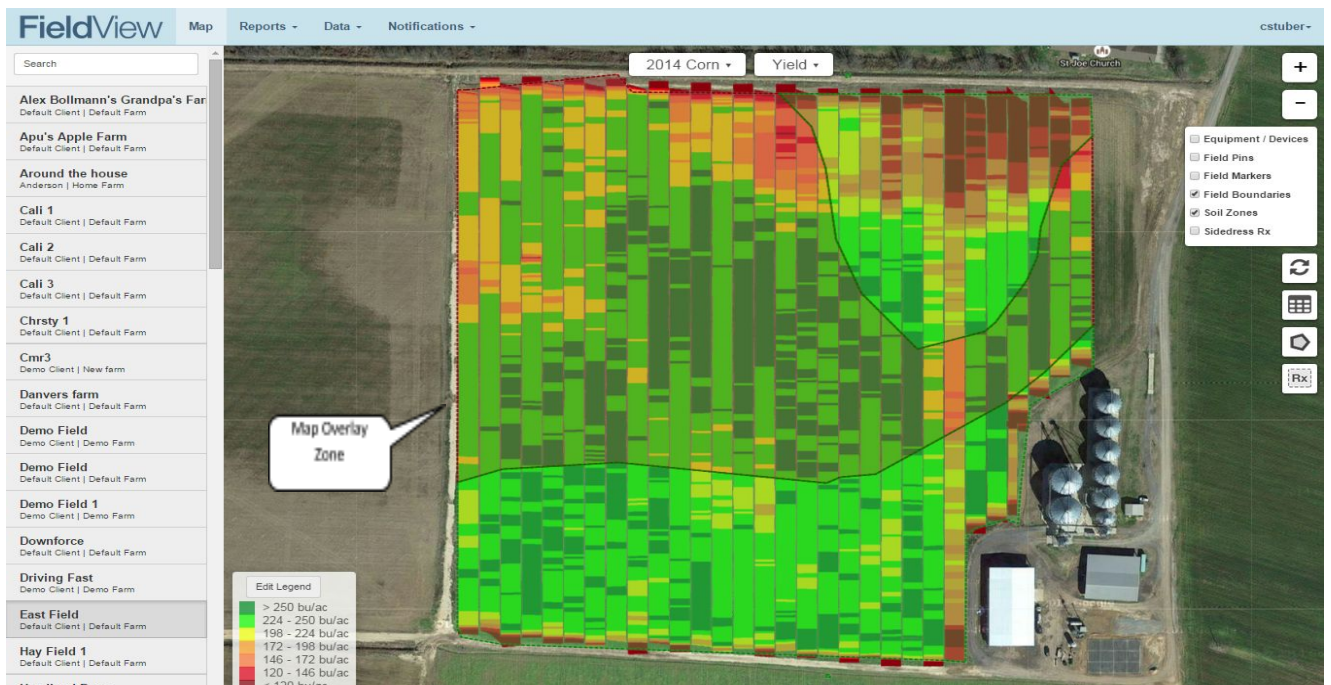
**Step #2:** View As Planted and Harvest Maps as well as Soil Zone or Import Map Overlays

- Select the Year and Crop Type (only 2014 and newer field maps are available)
- Choose from Population, Hybrid, Planter Speed, Yield, Moisture, Combine Speed, and Elevation maps to view (if applicable).
- If no map is available the field boundary will be visible. This can be edited by clicking on the boundary. If there is a question mark next to a field name, there is no data or boundary available. Select the question mark to draw a boundary for the field.



### Step #3 Overlay As Planted and Harvest Maps with Soil Zones or Imported Maps

- Click on the Map Layer option
- One Map Layer can be viewed at a time (overlays are optional)
- Click on any overlay zone to get detailed data about it.
- Note\* To Upload Custom Maps (Shape Files) for viewing as an overlay, go to Data, Map Importer and upload polygon based Shape Files.





**Step #4: View Field Report and Use the Drawing Tool to analyze Yield on a portion of the field**

- Polygon Report will generate when polygon is completed
- Multiple Polygons can be drawn on field.
- Each Polygon will generate a yield report for the polygon. The report will include information on average yield and moisture for each soil type, hybrid, and elevation.
- “Field Report” generates field wide report

