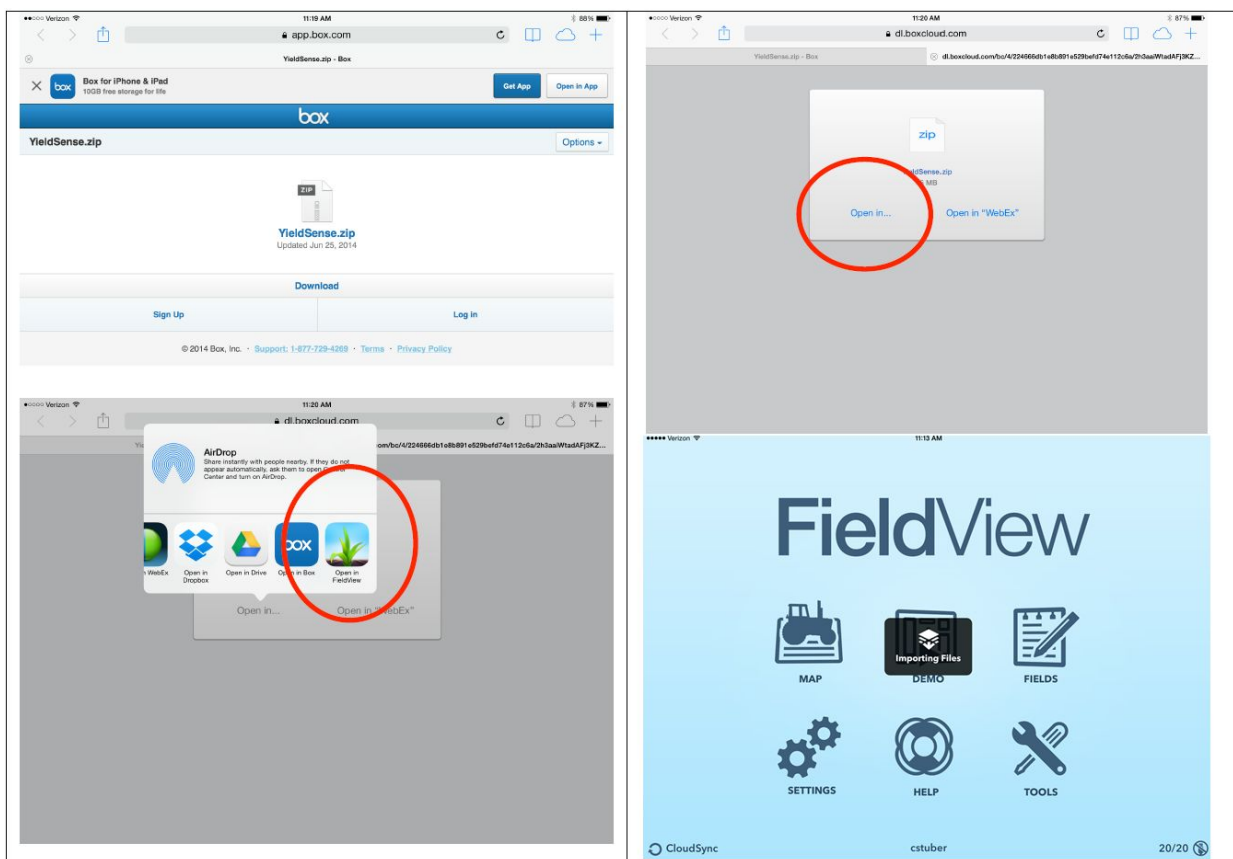


How to Save Files into FieldView from Box

Summary: FieldView users can import .zip file attachments that contain Shape Files or 20/20 field (.dat) files into the FieldView app directly from a box account. This is another way to get prescription files or field files from one FieldView account into another FieldView account (these shared fields will only be available to view on the FieldView Cab App)

Step #1: Save Box Attachment to FieldView

- From your box account click “Download” and it will open another tab with the file. Press “Open in...” for the attached .zip file that contains either Shape Files or 20/20 Field Files.
- Choose “Open in FieldView” from the options presented.
- FieldView will open with a message “Importing Files”.



Step #2: Use files in FieldView Cab App

- Field Files will import and build maps on the iPad. Note* Use this to import Field Files from a different FieldView account.