

**Summary:** Climate FieldView users can use the FieldView website to centrally manage the Field List & Boundaries for their entire operation. Field Names & Boundaries are kept in sync between the FieldView Web, Climate Basic/Pro, the Climate FieldView Cab App on all iPads, and all 20/20 displays (FV Web boundaries do not sync over to the 20/20).

**A. FV Web Field Manager:** Under the Data menu, choose Field Manager to manage the field list for FieldView and Climate Basic/Pro (Changes here will also sync down to the 20/20 display when the iPad is reconnected).

| Field        | Farm        | Client         |           |
|--------------|-------------|----------------|-----------|
| 061          | Demo Farm   | Demo Client    |           |
| 0p07         | Demo Farm   | Demo Client    |           |
| 1            | 7.74.00     | Tds1           |           |
| 1            | Demo Farm   | Demo Client    | 3/7/2014  |
| 1            | Test        | Demo Client    | 3/7/2014  |
| 1.28.14-RX.2 | R and d     | VDRIVE TESTING | 1/29/2014 |
| 123          | Demo Farm   | Demo Client    | 3/17/2014 |
| 1356097      | Demo Farm   | Demo Client    | 4/1/2015  |
| 1770 test    | Demo Farm   | Demo Client    | 4/21/2014 |
| 2            | 7.74.00     | Tds1           | 2/10/2014 |
| 2            | Test        | Demo Client    | 3/7/2014  |
| 2-10-14 F6   | Multihybrid | DB44           | 2/27/2014 |
| 2-10-14 F 1  | Multihybrid | DB44           | 2/27/2014 |
| 2-10-14 F2   | Multihybrid | DB44           | 2/27/2014 |
| 2-10-14 F3   | Multihybrid | DB44           | 2/27/2014 |
| 2-10-14 F4   | Multihybrid | DB44           | 2/27/2014 |
| 2-10-14 F5   | Multihybrid | DB44           | 2/27/2014 |
| 2-11-14 F1   | Multihybrid | DB44           | 2/27/2014 |
| 2-11-14 F3   | Multihybrid | DB44           | 2/27/2014 |
| 2-11-24 F2   | Multihybrid | DB44           | 2/27/2014 |
| 2-13-14 F2   | Multihybrid | DB44           | 2/27/2014 |

- 1. Add:** Create a new field manually – will sync new field to the Climate FieldView Cab App on the next CloudSync and to the 20/20 upon the next connection. It is also available immediately in Climate Basic/Pro.
- 2. Edit:** Change Field name or select a new Client or Farm for a selected field by

clicking the pencil icon next to the field name. You can also create a new Client or Farm for the selected field. Changes will be synced to the Climate FieldView Cab App on the next CloudSync and to the 20/20 upon the next connection. Changes are automatically updated in Climate.

**3. Merge:** Select 2 fields to merge together (i.e. if 2 fields had different spellings). Merge will combine fields in FV Web and on the next CloudSync, all iPads will rebuild combined maps in a single field.

*Note\* If Climate Pro is set up on one of the fields, select it as the field name to keep because the other field name will be deleted and Pro acres will be affected. If a field has Pro acres, a "Pro" tag will appear next to the field name.*

**4. Delete:** Field will be completely removed from FieldView Web and Climate. On the next CloudSync it will be purged from the Climate FieldView Cab App and when the iPad is connected to the 20/20, the field will be removed from the 20/20 as well.

**5. Request Field Import:** Will send an email to an agronomist/trusted advisor, requesting fields be imported to FieldView from a 3rd party application.

**6. Import:** Compatible 3<sup>rd</sup> party applications are able to import fields directly into a grower's FieldView account. These applications currently include: SST Summit, Mapshots AgStudio, AgVance Mapping, and Onsite. Imported fields are available under the "Import" tab. Also under the "Import" tab is the ability to upload multiple boundary shapefiles from any other 3rd party such as SMS. This will allow a grower who has all their boundaries set up in SMS to bring them over to FieldView if they don't already have boundaries set up.

## **B. Managing Field Boundaries in FieldView Website**

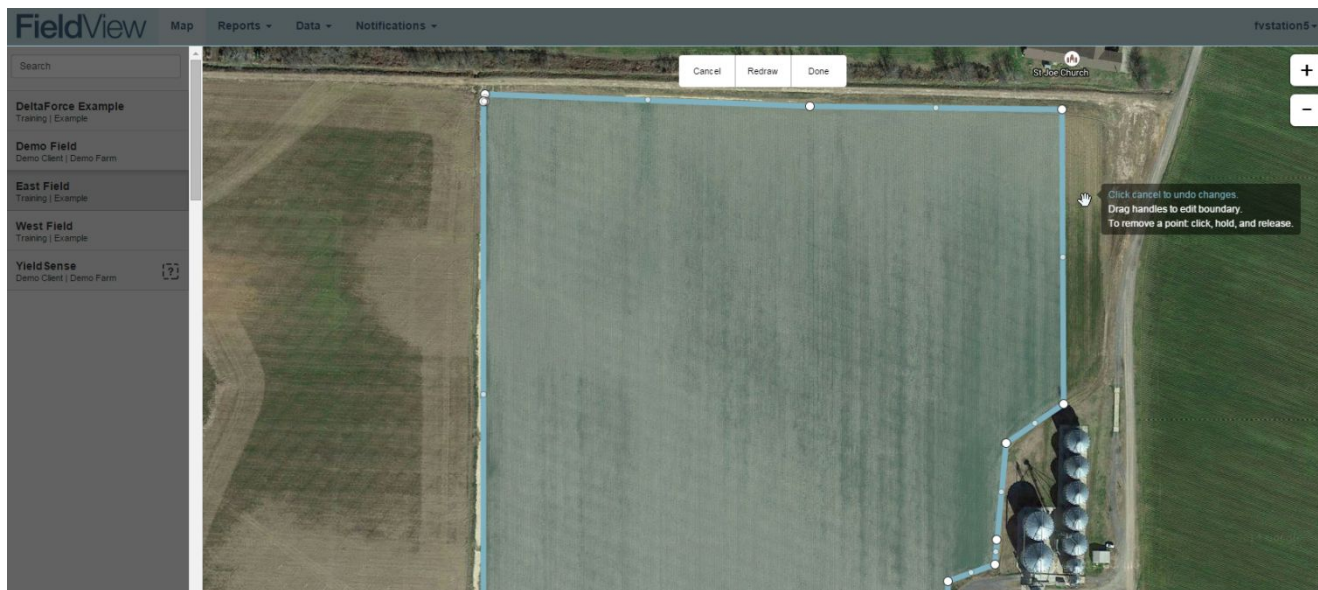
Field Boundaries can be viewed and edited in the FieldView Website under the Map screen. The field boundaries are shared with Climate Basic/Pro and also are used in the FV App on the iPad to prompt the operator to change the active field when entering a new field boundary (this feature can be turned on or off in the FieldView "Settings" page).

*Note\* Climate users can also manage field boundaries in the Climate website and updates will automatically appear in FieldView.*

1. Click on the field map and an option to edit the field boundary will appear.



2. Use the mouse to adjust the field boundary as necessary, by moving the vertices, and click “Done” to save. You can also choose to redraw the boundary from scratch.



3. Fields that do not have boundaries defined are indicated by a “?”



- Clicking on the field name will give you the option to create a new boundary or to upload a new shapefile to use as a boundary.

