

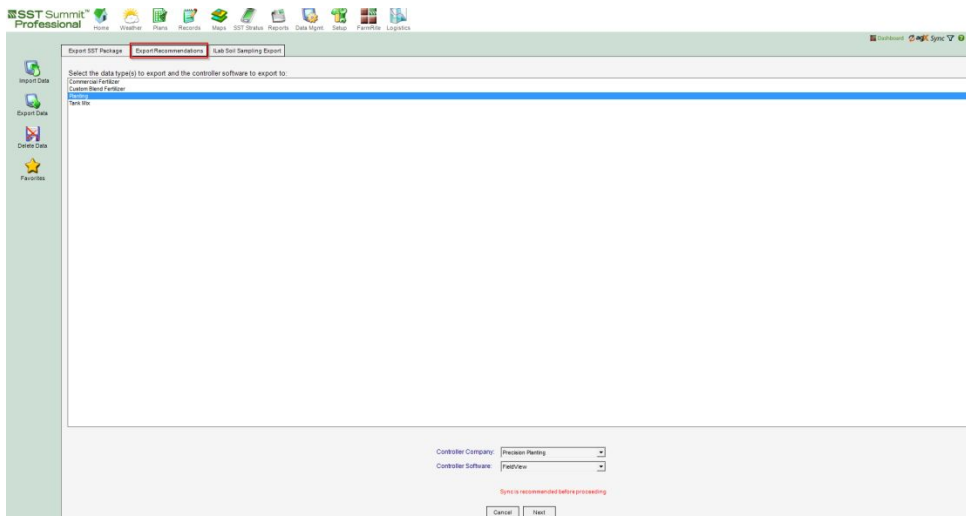


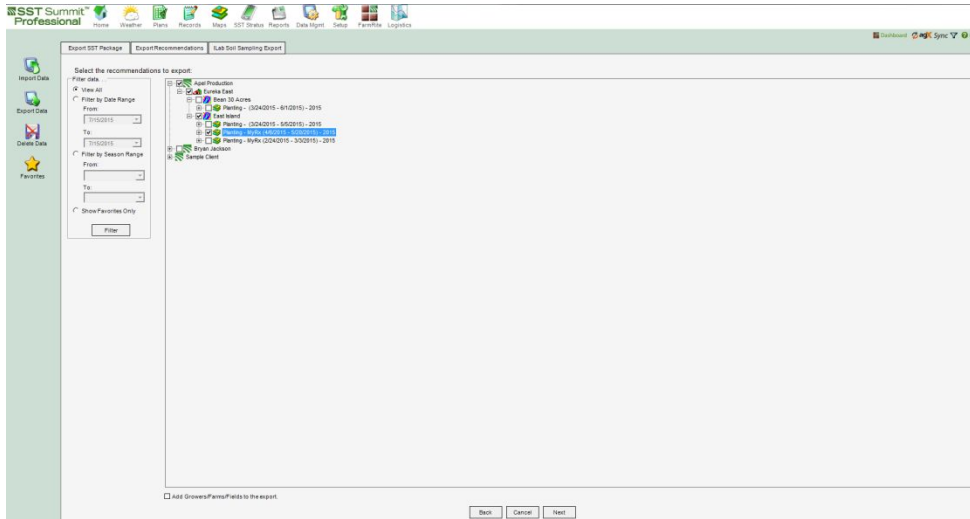
## How to Export Fields & Seeding Prescriptions from SST Summit Professional and Import into FieldView

**Summary:** Users of SST’s Summit Professional can export Field Boundaries and Seeding Prescriptions to a grower’s FieldView account. The grower can then import the fields and/or prescriptions into the FieldView website. Imported fields are then visible in the FieldView app & Climate Basic/Pro and Seeding Prescriptions will sync down to the FieldView app and can be moved to the 20/20 SeedSense via Data Transfer on the app.

**Step #1: Export Fields and/or Seeding Prescriptions from Summit...make sure to SyncNow before exporting. The synced copy of fields and recommendations will be exported.**

1. Go to Data Mgmt→Export Data→Export Recommendations and Choose:
  - a. Planting
  - b. Set Precision Planting as the Controller Company
  - c. Set FieldView as the Controller Software and click “Next”
2. Select recommendations to export for a single or for multiple growers
  - a. Expand the Grower/Farm/Field tree to find recommendations (prescriptions)
  - b. This step can be skipped if no recommendations are available and click “Next”





To Export Grower/Farm/Fields that don't have recommendations (Grower/Farm/Field names and boundaries only) check the box at the bottom of the screen and click "Next"

c. Check the boxes next to each Grower/Farm/Field to export and click "Next"

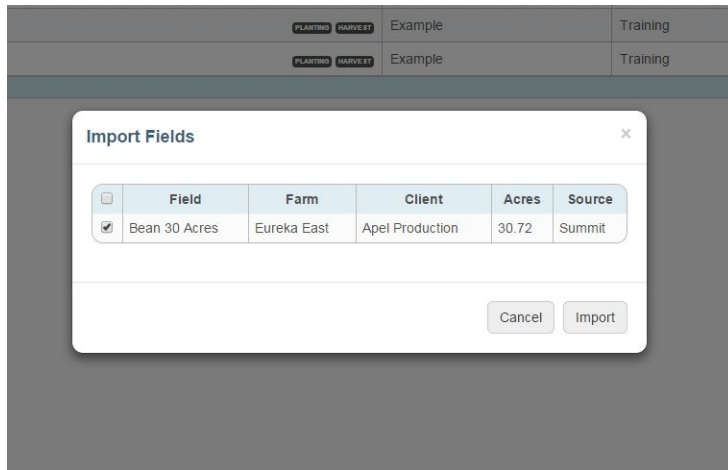
3. Enter email address of Grower's Precision Planting Account and click "Next"
4. Export Results will be displayed as a confirmation
5. Upon a successful export of Fields or Seeding Prescriptions (recommendations), the grower will receive an email notification.

From: [fieldview@precisionplanting.com](mailto:fieldview@precisionplanting.com) Sent: Thursday, February 27, 2014 2:27 PM To: [jgrower@yahoo.com](mailto:jgrower@yahoo.com)  
Subject: FieldView - Field available for import

There is a new field available to be imported from Summit

## Step #2: Import fields into the FieldView website

1. Login to <http://fieldview.precisionplanting.com> and go to Data→Field Manager
2. Click on the Import button and select the field(s) you wish to import and click "Import"
3. Fields will be synced down to the iPad and will also be available in Climate Basic/Pro



**Step #3: Fields will be synced automatically to the FieldView App (on iPad)**

1. Install the FieldView App on your iPad (see FieldView Operator Guide for details)
2. CloudSync will run and automatically bring fields from the FieldView website to the FieldView App.