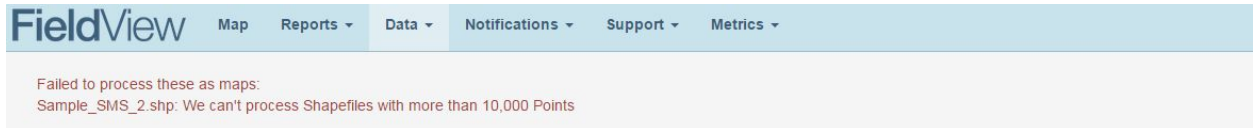
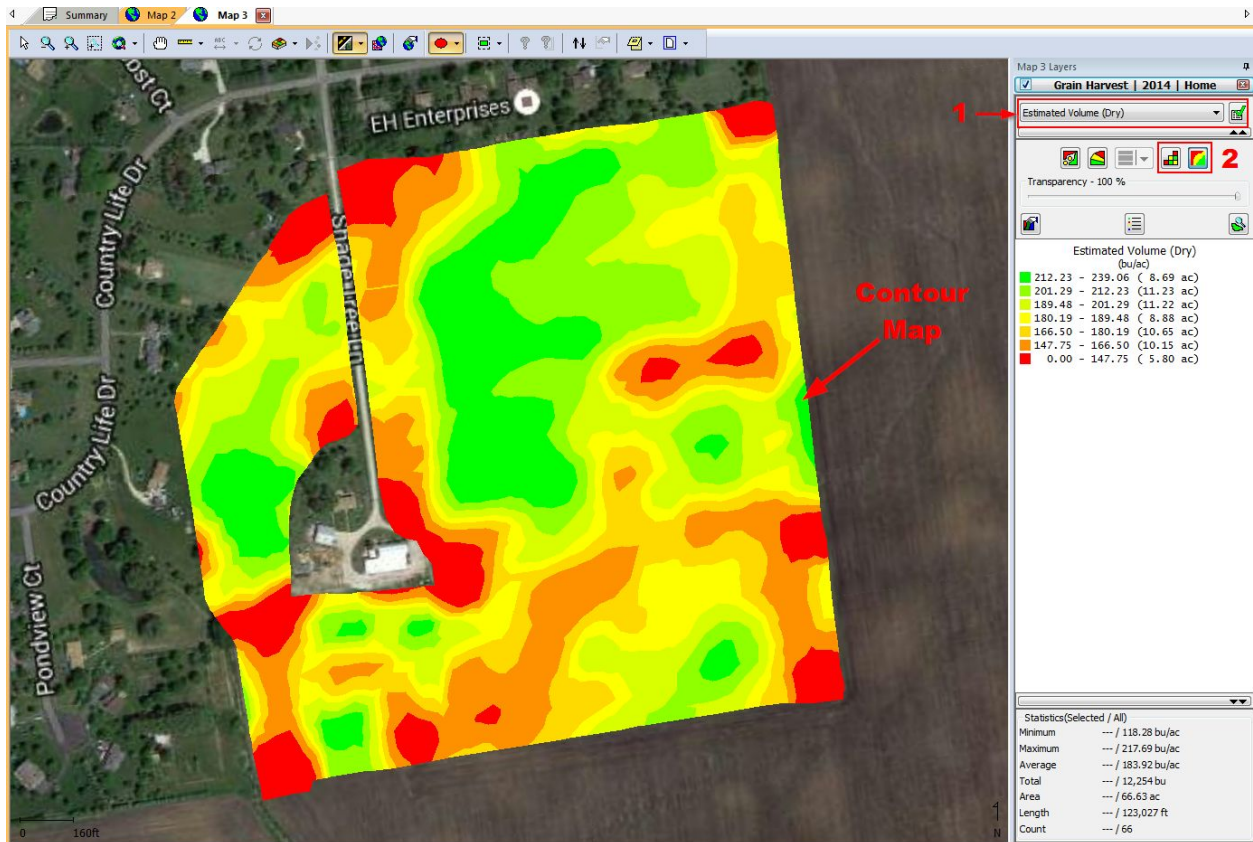


**Summary:** FieldView Plus users can use the FieldView website to upload Shape Files and transfer them wirelessly to their iPad to display as Imported Maps within FieldView (version 2.18+). The Shape File must be a **polygon format** (not points) for the FieldView website to import the files correctly, this tutorial will show you how to export a polygon shape file from SMS. This is necessary in cases where a larger field contains over 10,000 points, as FieldView is reading each point as a separate polygon. In those cases, FieldView Web will give the below error:



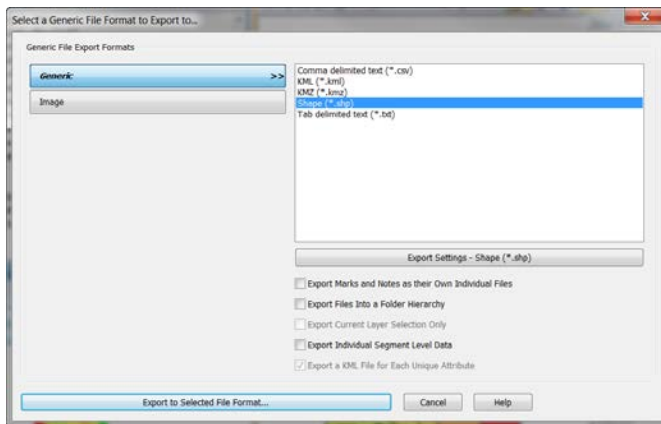
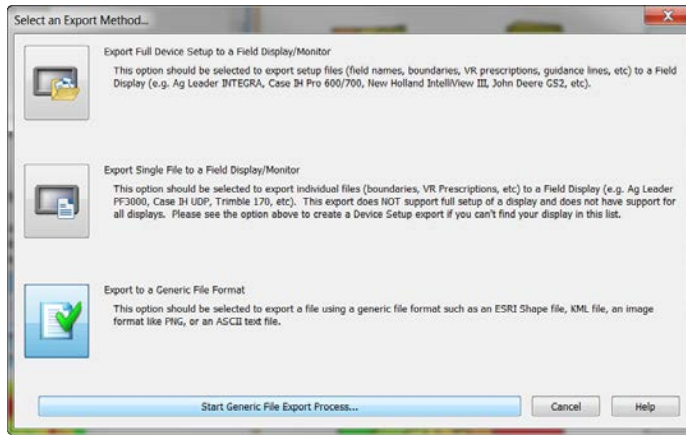
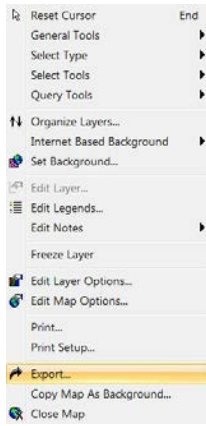
### Step #1: Build a Grid or Contour Map of your operation.

- Select your operation and build a “New Map” of the operation.
- Select the attribute that you want to export (box 1 below)
- Select either the Grid Map or Contour Map (box 2 below). Note Spatial and Smart Rectangle Maps export as points, while Grid and Contour Maps export as polygons.



## Step #2: Export the map to a Shape File.

- Right click on the map and select the export button.
- Select the "Export to a Generic File Format" option, and click "Start Generic File Export Process".
- Then select a "Shape (\*.shp)" file type, and click "Export to Selected File Format".



**Step #3: Upload “.shp”, “.shx” and “.dbf” files to FieldView Web.**